

RESPONSIVE

We listen. We're responsive.

Vega Super RQ®

Homogeneous: Directional

2018



Special Features



CERTIFIED BY
SCS Global Services

Applications

- Hospitals & Clinics
- Reception areas
- Waiting rooms
- Auditoriums
- Schools & Classrooms
- Supermarkets
- Kindergartens
- Laboratories
- Dormitories

Product Description

Vega Super RQ® is a **Phthalate free**, fully flexible homogeneous, directional floor covering with a classic design incorporated throughout the entire 2.00mm / 3.00mm thickness of the product.

Vega Super RQ® is treated with RQ Protect process providing a high level of durability and acting as a barrier against stains and chemical aggression. RQ Protect completely replaces the application of wax or polish during the lifetime of the product.

Vega Super RQ® is VOC compliant (≤ 12 Chronic REL) and formaldehyde compliant ($\leq 9.0 \mu\text{g}/\text{m}^3$) according to the CDPH/EHLB/Standard, Method V1.1-2010 (certificate 120316-01).

Vega Super RQ®

Homogeneous: Directional - Phthalate Free



The Workhorse

Intended for use in the toughest and most demanding environments, Vega Super RQ® is the preferred choice for professionals looking for durability and performance. With completely revamped colours and upgraded stain, chemical, scratch and scuff resistance, the floor retains its lustre throughout its lifetime.



VS - 09

Bone White



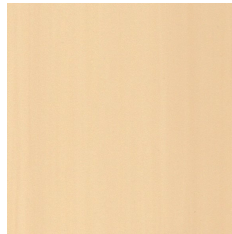
VS - 02

Scotch Mist



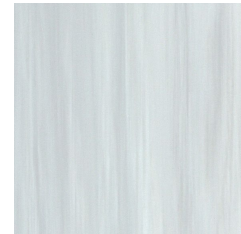
VS - 13

Silver Charm



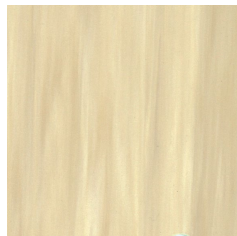
VS - 08

Chamois



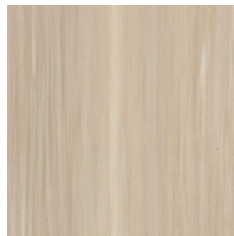
VS - 17

Pale Smoke



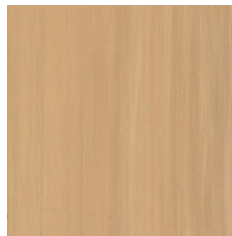
VS - 15

Macaroon Cream



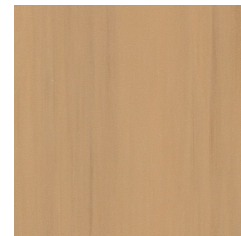
VS - 18

Sugar Cookie



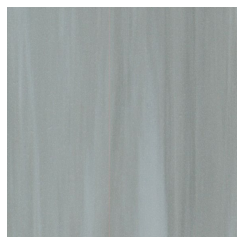
VS - 21

Bison Beige



VS - 22

All Spice



VS - 20

Wrought Iron



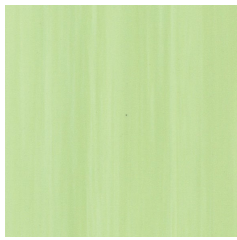
VS - 12

Victorian Pewter

Matching welding rods are available for every colour.
Printed shades may appear slightly different from actual samples.

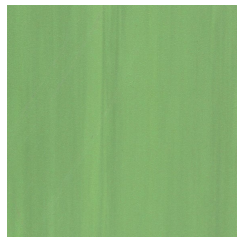
Vega Super RQ®

Homogeneous: Directional - Phthalate Free



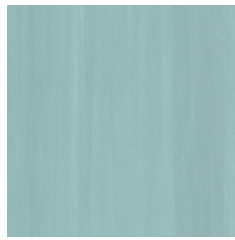
Peridot Green

VS - 07



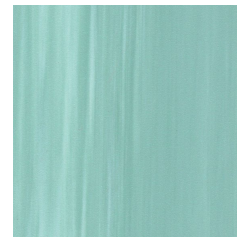
Chartreuse

VS - 10



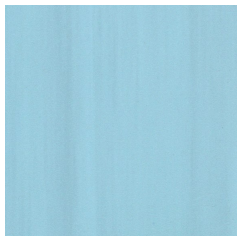
Celadon

VS - 03



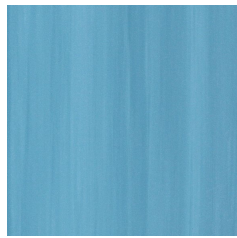
Shire Green

VS - 04



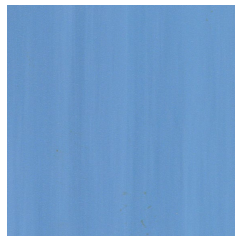
Maui Blue

VS - 01



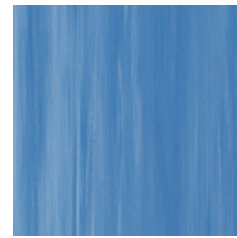
Chataqua Aqua

VS - 05



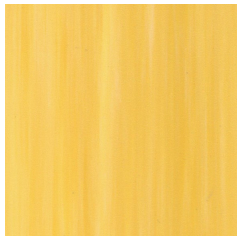
Blue Motif

VS - 19



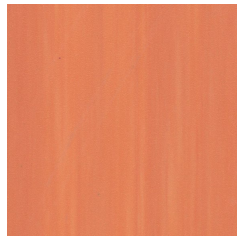
Hawaiian Blue

VS - 11



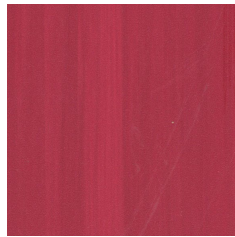
Benji Moore

VS - 16



Calypso Orange

VS - 06



Carmine

VS - 14

Matching welding rods are available for every colour.

Printed shades may appear slightly different from actual samples.

Vega Super RQ®

Homogeneous: Directional - Phthalate Free



Characteristics	Standards	Units	Vega Super RQ®	
Phthalate Free			Yes	
Indoor Air Quality	CA Section 01350 ($\leq 0.5 \text{ mg} / \text{m}^3$)	Floorscore Certified (SCS - FS - 04547)	Yes	
	ISO 16000-6, TVOC after 28 days	$\mu\text{g}/\text{m}^3$	< 10 (Fully compliant)	
Description				
Type of floor covering	ISO 10581	Type 1 - Binder Content	Homogeneous vinyl flooring (Directional)	
General performance	ISO 10874 - EN 685	Classification	34: Very Heavy Commercial 43: Heavy Light Industrial	
Usage / Wear Resistance	BS EN 649	Group T	Heavy foot traffic / Heavy duty	
Special treatment			RQ Protect: no wax no polish for life	
Overall thickness	ISO 24346 - EN 428	mm	2.00	3.00
Thickness of wear layer	ISO 24340 - EN 429, ASTM F410	mm	2.00	3.00
Weight	ISO 23997 - EN 430	g/m^2	2950	4500
Sheet size	ISO 24341 - EN 426	m (width)	2	2
		m (length)	20	15
		m^2 (surface area)	40	30
Tile Size	ISO 24342	cm x cm (length x width)	30 x 30cm 50 x 50cm 61 x 61cm	
Abrasion resistance	EN 660 - 2	Group	T	
	EN 660 -2	Volume loss mm^3	< 2	
	ASTM D3389 (weight loss / 1000 cycles)	g	< 0.40	
Castor chair test	ISO 4918 - EN 425	Type of use	Continuous	
Slip resistance	DIN 51130	Ramp Test	R 10	
	EN 13893 ASTM D2047	Coefficient of friction	DS (> 0.30) Pass (0.70 avg)	
Dimensional stability	ISO 23999 - EN 434	%	≤ 0.40	
Flexibility	ISO 24344 - EN 435	20mm mandrel	No Cracking	
	ASTM F137		Pass	
Seam Strength	ISO 16906	N/50mm	Pass	
Residual indentation	ISO 24343 - 1 - EN 433	mm	≤ 0.10	
	ASTM F970	psi	800	
	ASTM F1914	inches	Avg. 0.001	
Colour fastness to light	EN ISO 105 - B02	Degrees	≥ 6	
	ASTM F1515	$\Delta E \leq 800$ after 300 hours (colour change)	Pass	
Static electrical propensity	EN 1815	kV	< 2.0	
Thermal resistance	EN 12667	$\text{m}^2 \text{ k}/\text{W}$	Approx 0.01 $\text{m}^2 \text{ k}/\text{W}$ (suitable at 27°C)	
Heat Stability	ASTM 1514	$\Delta E \leq 0.80$ (colour change)	Pass	
Reaction to fire	EN ISO 9239-1	kW/m^2	≥ 8	
	EN ISO 11925-2		Pass	
	EN 13501-1 : 2007+A1	Class	Bfl - S1	
	ASTM E 648	Type	1	
Smoke density	ASTM E 662	Dm	< 450 (Pass)	
Stain & chemical resistance	ISO 26987 - EN 423	Index	0 (Excellent resistance)	
	ASTM F925	Resistance	Pass	
Fungi & bacteria resistance	ISO 846 A, C		Does not favour growth	
Maritime usage	IMO RES A 653 (16)		Annex 1 Part 2 (Smoke & Toxicity)	
	IMO MSC 61 (67)		Part 5 (Spread of Flame) and Annexure 2	
	Marine Equipment Directive		1121	

